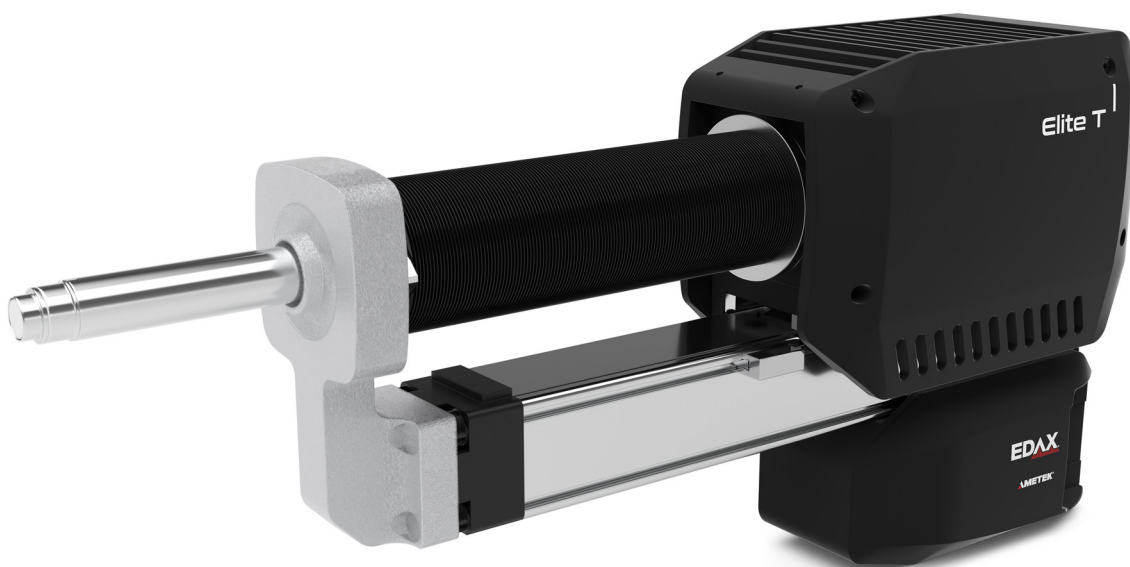


# EDAX EDS Powered by Gatan

## Models 1071 and 1072

The EDAX energy dispersive spectroscopy (EDS) is now powered by Gatan DigitalMicrograph® software. This combination is the most intuitive and easy-to-use EDS tool for (scanning) transmission electron microscope (STEM) applications. It offers fully integrated data acquisition and signal processing, coupled with features to guide setup and analysis. The Elite T maximizes collection efficiency and optimizes light element performance, while DigitalMicrograph is the industry standard for TEM/STEM experimental control and analysis across the range of imaging and analytical techniques. This powerful combination helps you achieve the best possible results in challenging conditions.



### Compact sensor geometry

- Uses EDAX exclusive 70 mm<sup>2</sup> compact sensor
- Gets closer to the sample to maximize the solid angle, increasing count rates and ensuring faster data collection on sensitive samples
- Integrated collimator design to reject stray x-rays / system peaks

### Optimized SDD sensor and electronics package

- Outstanding resolution and minimal peak shift at all count rates for optimal deconvolution
- High maximum count rate for fast mapping and time to data

### Windowless design

- Excellent sensitivity for low energies down to Al L
- Full detector area entitlement with no window grid
- Optional IR filter for high-temperature, *in-situ* applications

## Full DigitalMicrograph integration

- One-stop analysis platform for all TEM/STEM applications, reducing training time and cost
- Powerful, multi-dimensional data analysis and visualization tools allows you to effortlessly delve into complex data sets
- Real-time visualization and analysis for instant experiment feedback
- Native support for DigitalMicrograph Scripting and Python™ programming to customize your analysis

## Powered by STEMPack™ spectrum imaging

- Highly-configurable data acquisition – allows you to precisely control and refine your experiment
- Single-palette workflow simplifies all acquisition types: areas, lines, points, and time series
- Multiple live mapping and analysis modes
- Powerful post-processing and visualization

## Multimodal at its core

- All STEM data (EDS, electron energyloss spectroscopy (EELS), 4D STEM, cathodoluminescence, and imaging) on a single platform; one computer with fully connected data sets
- Seamlessly link all types of images, spectra, maps, and results for a complete view of your sample

## EDAX EDS Powered by Gatan options

Model	System	Detector	STEM Mapping	Computer
1071.TEM	Elite T EDS System	Single	Not included	Included
1071.Mapping	Elite T EDS Mapping System	Single	Mapping hardware and software	Included
1071.STEMEDS	Elite T EDS for STEMPack / STEMx	Single	Mapping software	Not included
1072.STEMEDS	Elite T EDS for STEMPack / STEMx	Dual	Mapping software	Not included

