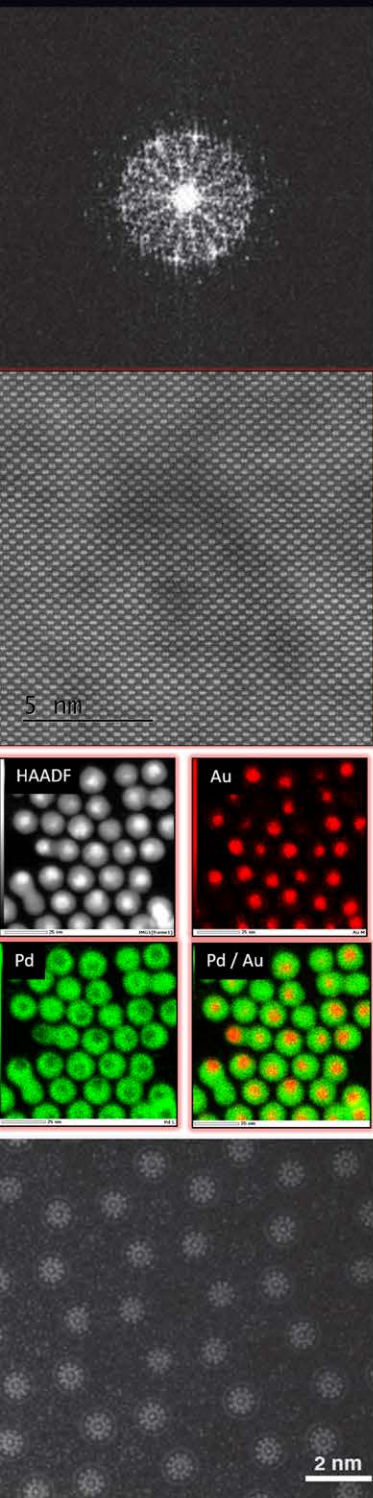




Multi-Purpose Analytical S/TEM

## JEM-F200 "F2"



### Emitter

A1: Electron Gun 1st Anode

A2: Electron Gun 2nd Anode

Acc: Acceleration Tube

GUNA1: Electron Gun 1st Beam Deflector Coil

GUNA2: Electron Gun 2nd Beam Deflector Coil

CL1: 1st Condenser Lens Coil

CL2: 2nd Condenser Lens Coil

CL3: 3rd Condenser Lens Coil

CL Ap: Condenser Lens Aperture

CLS: Condenser Lens Stigmator Coil

SPOT: Spot Alignment Coil

CLA1: Condenser Lens 1st Deflector Coil

CLA2: Condenser Lens 2nd Deflector Coil

HXA: Hard X-ray Aperture

CM: Condenser mini-Lens Coil

SPC: Specimen

OLAp: OL Aperture

HCOA: High Contrast OL Aperture

OLS: Objective Lens Stigmator Coil

OL: Objective Lens Coil

OM: Objective mini-Lens Coil

IS1: Image Shift 1st Deflector Coil

IS2: Image Shift 2nd Deflector Coil

PS: High Speed Piezoelectric Shutter

SA Ap: Selected Area Aperture

ILS: Intermediate Lens Stigmator Coil

IL1: 1st Intermediate Lens Coil

IL2: 2nd Intermediate Lens Coil

IL3: 3rd Intermediate Lens Coil

PLA: Projector Lens Beam Deflector Coil

PL: Projector Lens Coil

DF: Dark Field Image Observation Device

VIEW: Image View CCD Camera Unit

BS: Beam Stopper (Optional)

BF Ap: Bright Field Aperture (Optional)

BF: Bright Field Image Observation Device (Optional)