



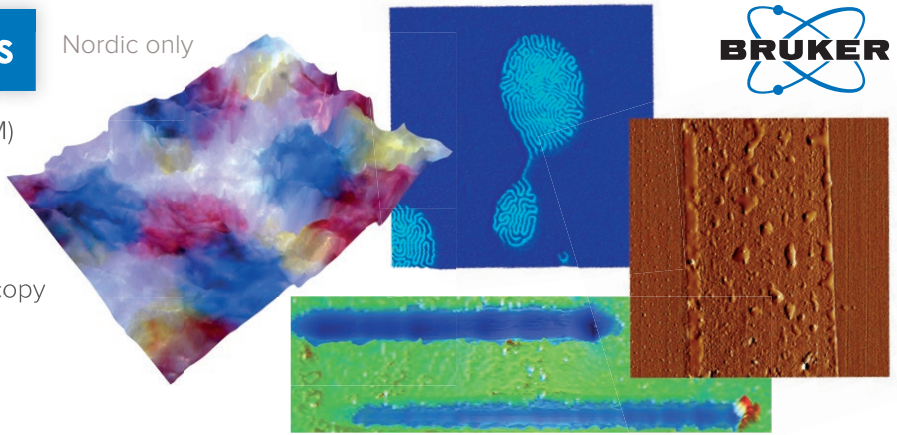
Blue Scientific provides market-leading
microscopy and scientific instruments
in the UK, Ireland and Nordic region.

+44 (0)1223 422 269 info@blue-scientific.com
www.blue-scientific.com

Nano Surface Analysis

Nordic only

- Atomic force microscopes (AFM)
- 3D optical surface profilers
- Stylus profilers
- Tribology testing
- AFM-IR nanoscale IR spectroscopy
- Nanomechanical testing



Micro-XRF and TXRF

Micro-XRF

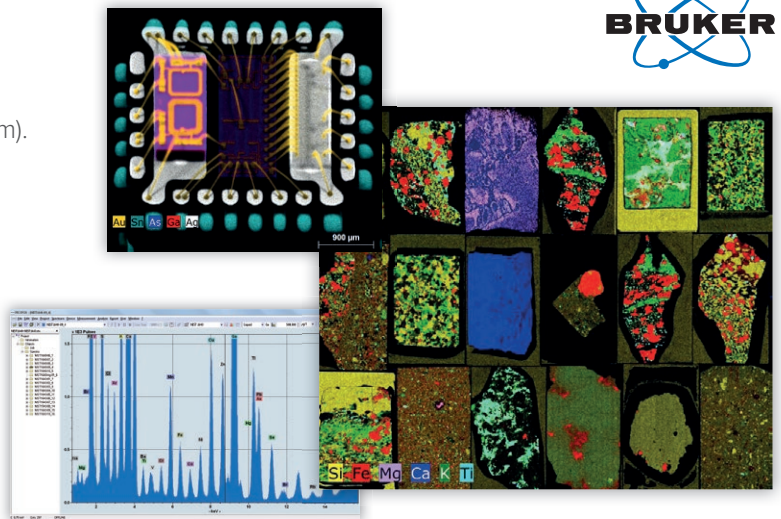
Multi-element analysis & mapping (Na to Am).

- Highly sensitive: 1-2 orders of magnitude greater than EDX
- Minimal or no sample prep
- Inhomogeneous & irregular shapes
- Fast mapping, <20µm spatial resolution

TXRF

Multi-element trace element analysis with ppm and ppb sensitivity.

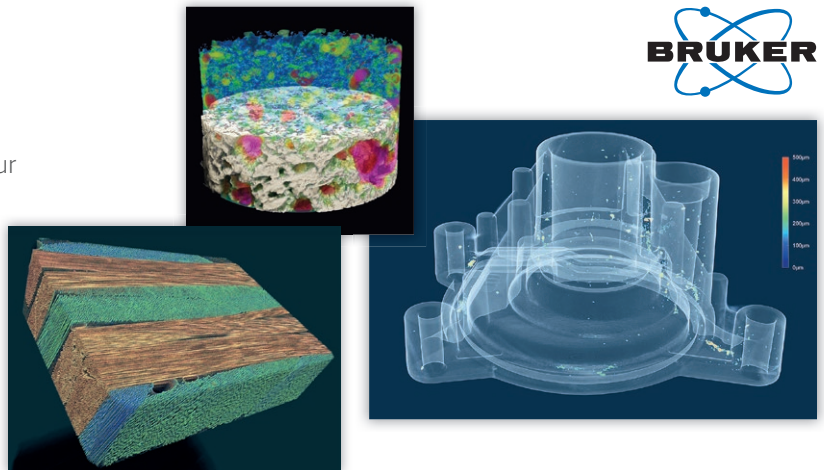
- Faster, simpler and cost-effective alternative to ICP-MS.



X-Ray Micro-CT

Non-destructive 3D internal imaging. Take virtual cuts and flights through your sample's internal micro-structure!

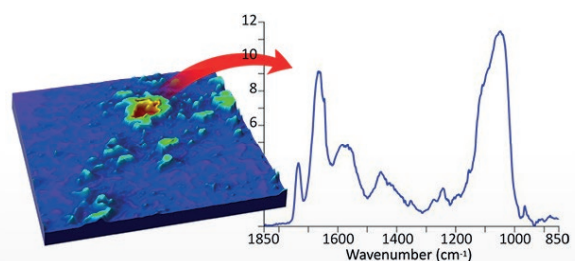
- Benchtop & floor-standing systems.
- Scan samples up to 500mm / 20kg.
- Sub-micron resolution.



Optical Photothermal IR

Breakthrough technique that overcomes the greatest limitations of IR spectroscopy.

- Sub-micron IR spectroscopy and imaging.
- Non-dispersive spectra from thick samples.
- Transmission quality IR spectra in reflection mode.
- Non-contact measurements.



PHOTOTHERMAL
SPECTROSCOPY CORP

NEW

Entry-Level SEM

UK & Ireland only

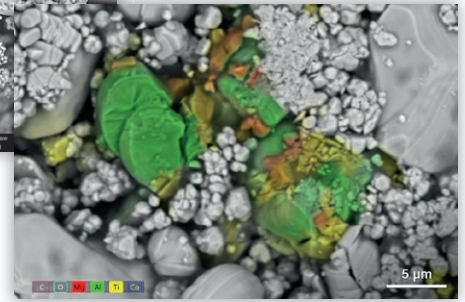
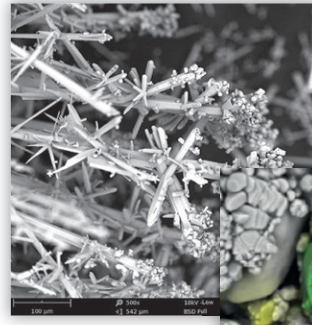
ThermoFisher
SCIENTIFIC

Phenom benchtop systems

- CeB6 source provides 10x more electrons than tungsten sources.
- Simpler: Never get lost again with the built-in optical navigation system.
- The only tabletop SEM with a field emission (FEG) source as an option.

Axia ChemiSEM

- Flexible sample capacity: up to 280 mm and 10 kg, or 7 sample stubs.
- Always-ready-to-image, with unique live quantitative EDS mapping.
- Save on maintenance with a system designed for reliability.



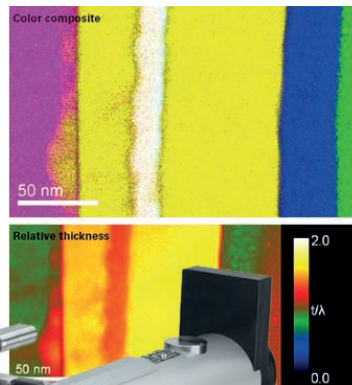
Spot contaminants easily with always-on EDS elemental analysis

Systems for TEM/SEM

Nordic only

Enhance the capabilities of your electron microscope:

- State-of-the-art cameras
- GIF Quantum energy filters
- Specimen holders
- Sample preparation systems



GATAN

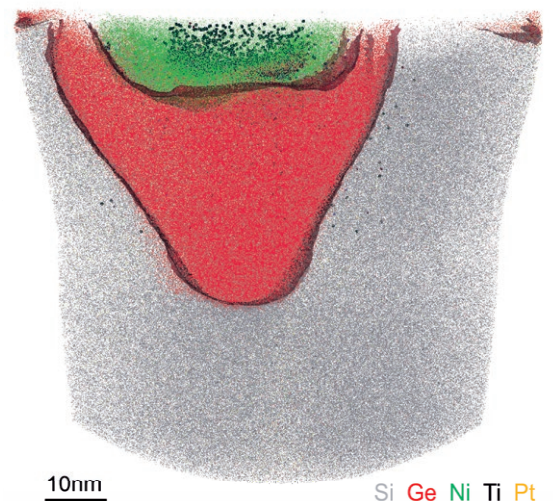
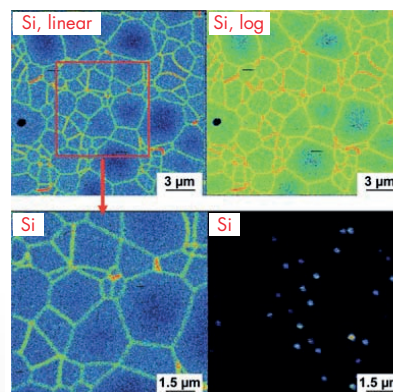


Elemental & Isotopic Microanalysis

UK, Ireland & Finland only

CAMECA
SCIENCE & METROLOGY SOLUTIONS

- Atom Probe Tomography - The only materials analysis technique for 3D imaging and chemical composition at near atomic resolution.
- NanoSIMS - The most sensitive elemental and isotopic surface microanalysis technique.
- LEXES
- EPMA



10nm

Si Ge Ni Ti Pt

X-Ray Analysis

Nordic only



Elemental analysis and crystallography:

- XRD
- XRF
- SC-XRD
- SAXS



Raman Microscopy

Nordic only



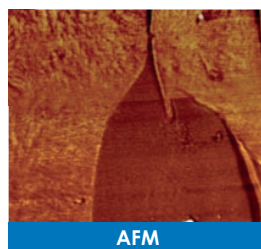
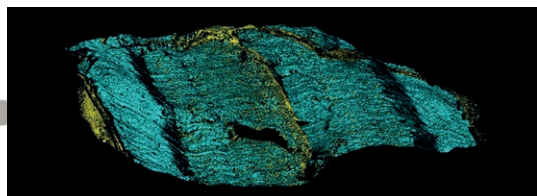
Flexible and upgradeable Renishaw InVia Raman microscopes.

- 'LiveTrack' technology for high topography surfaces.
- Exceptional performance.
- High throughput.

Raman-AFM

Combine Raman microscopy with Bruker AFM or SPM for a wealth of nanoscale information.

Reveal hidden information about your sample, taking your material characterisation to a new level.



AFM



Raman



Service and Support

- Local support from our service team based regionally in four Nordic countries.
- PhD level engineers with extensive experience.
- The same level of support you'd expect from dealing directly with the manufacturer - with the personal service of a smaller company.

Contact us for more information:

+44 (0)1223 422 269 info@blue-scientific.com

blue-scientific.com

