

Choose the Right SEM for Your Lab



Tabletop



W-SEM

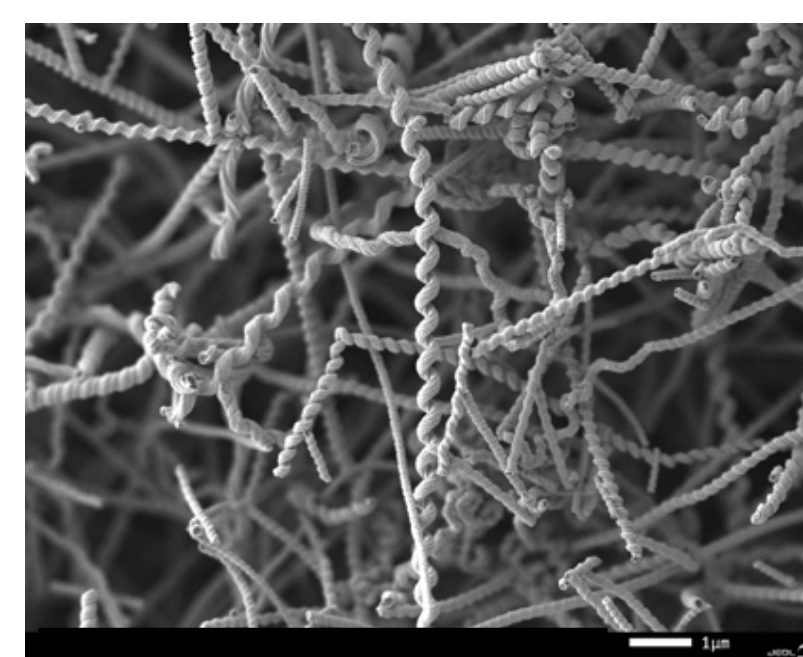
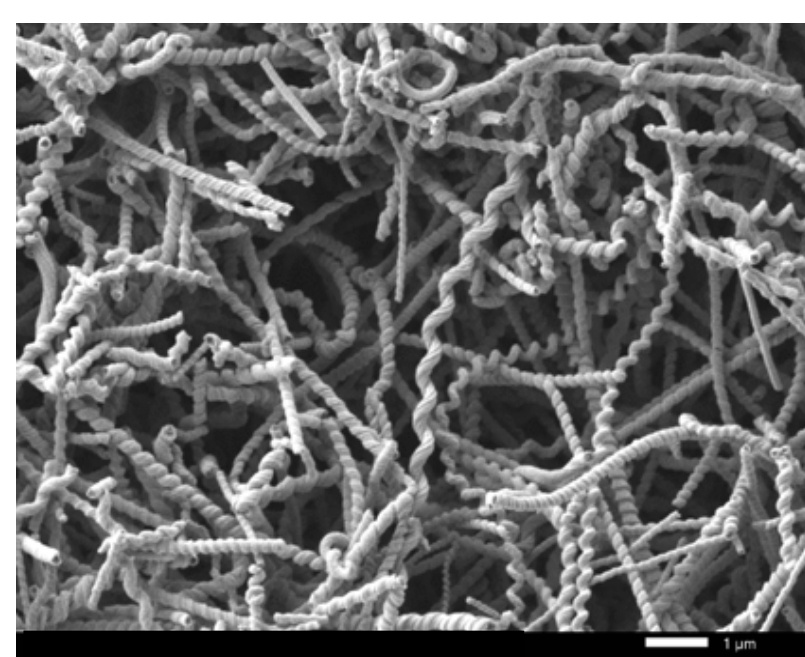
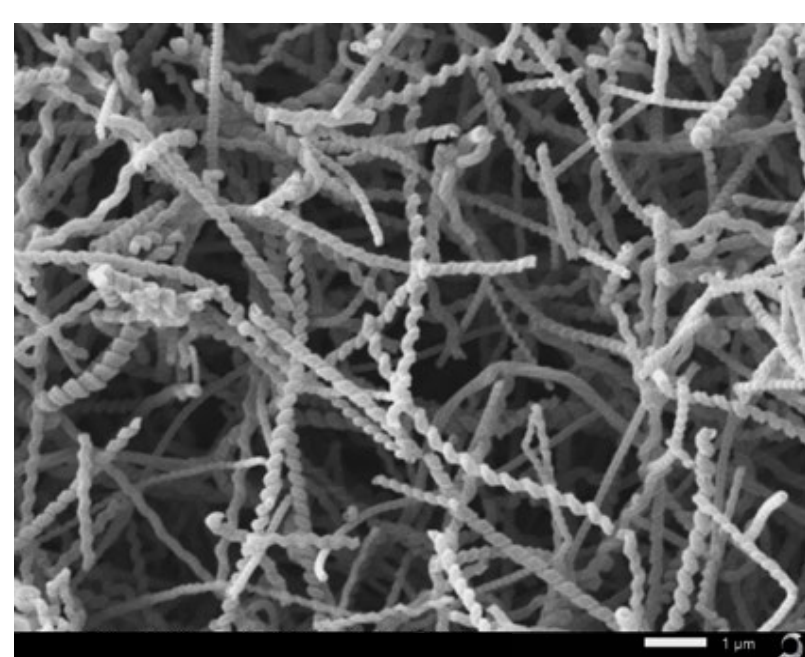
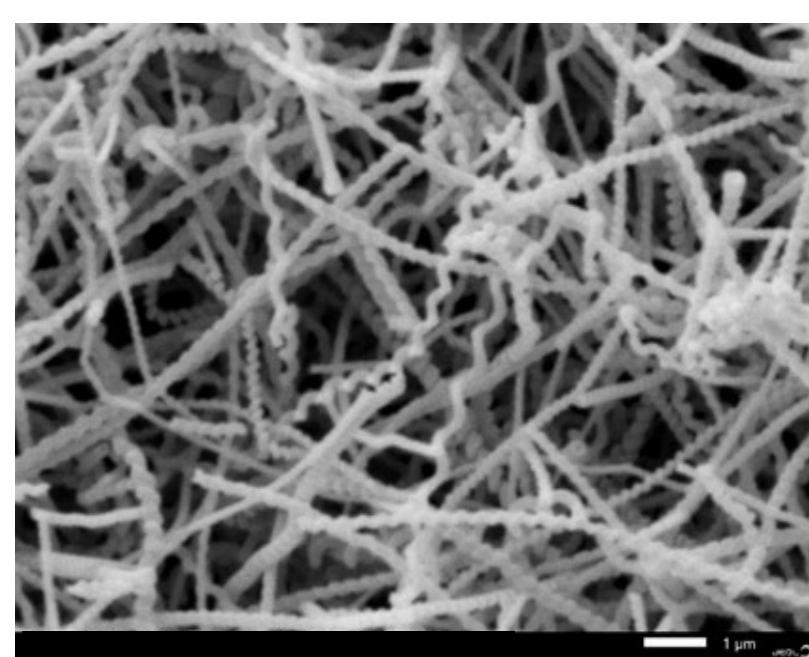


Multipurpose FEG



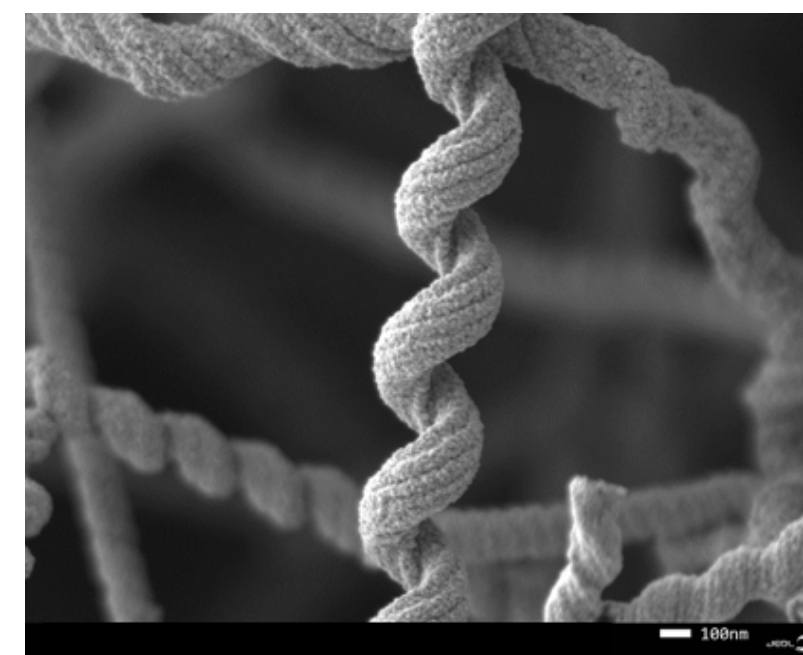
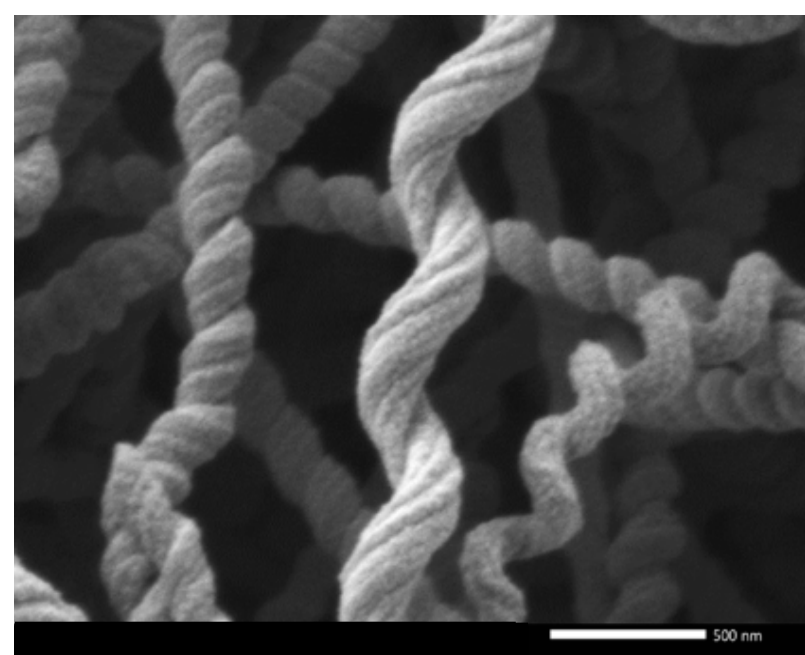
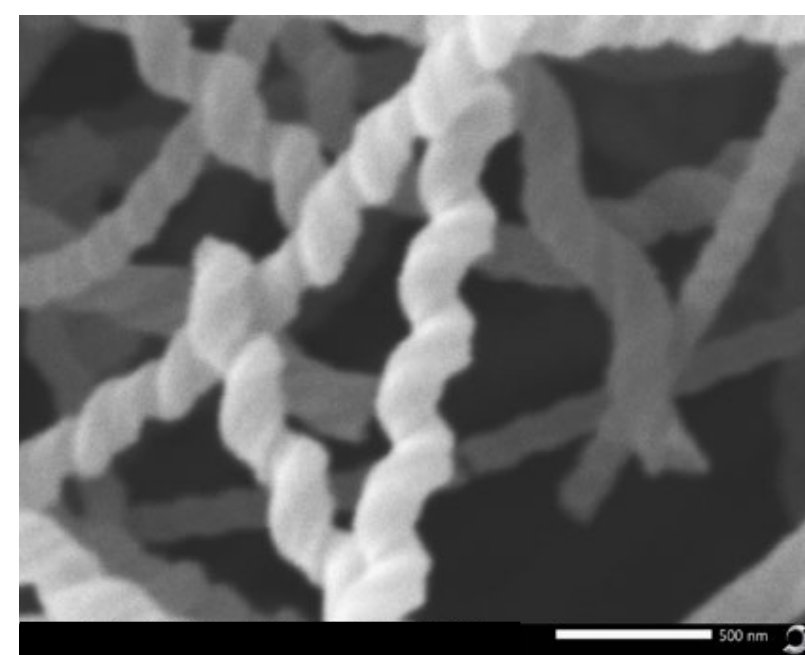
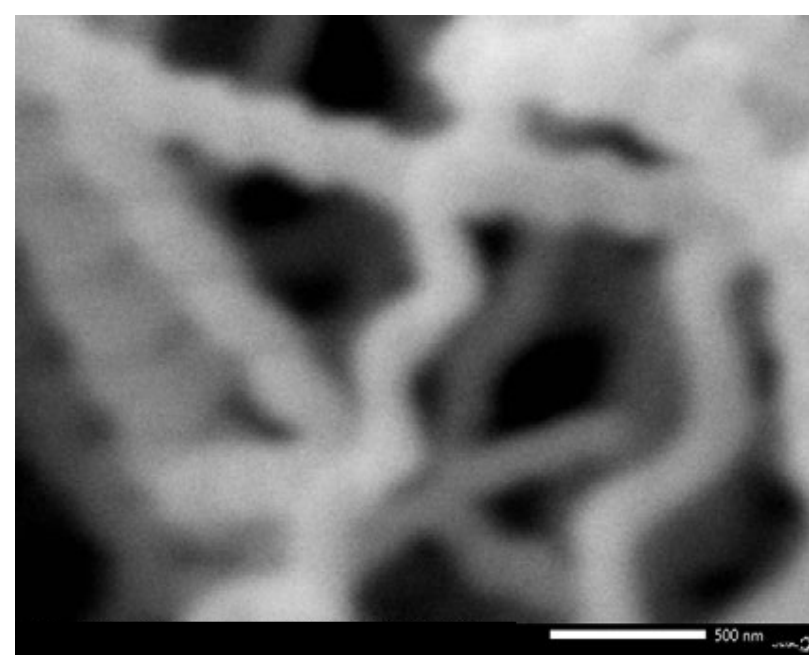
UHR FEG

10nm/pix



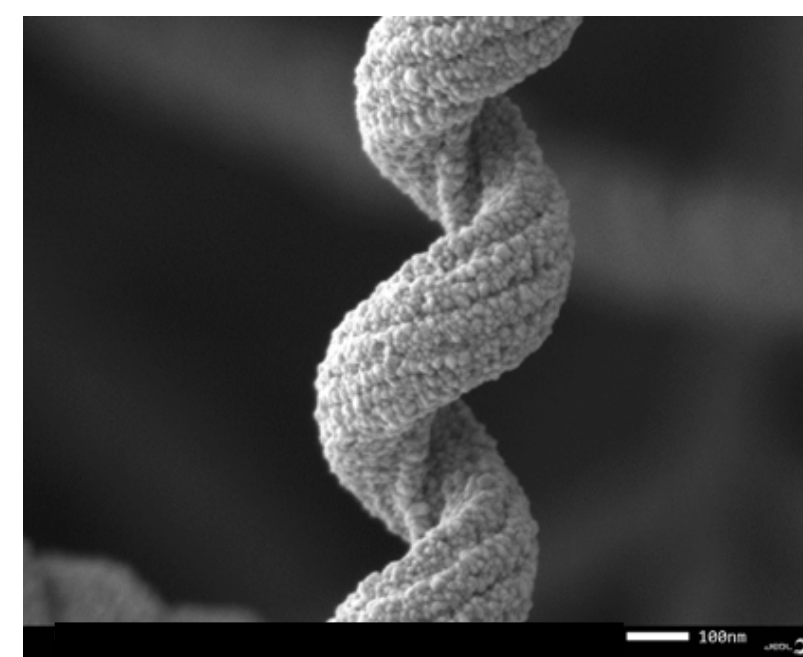
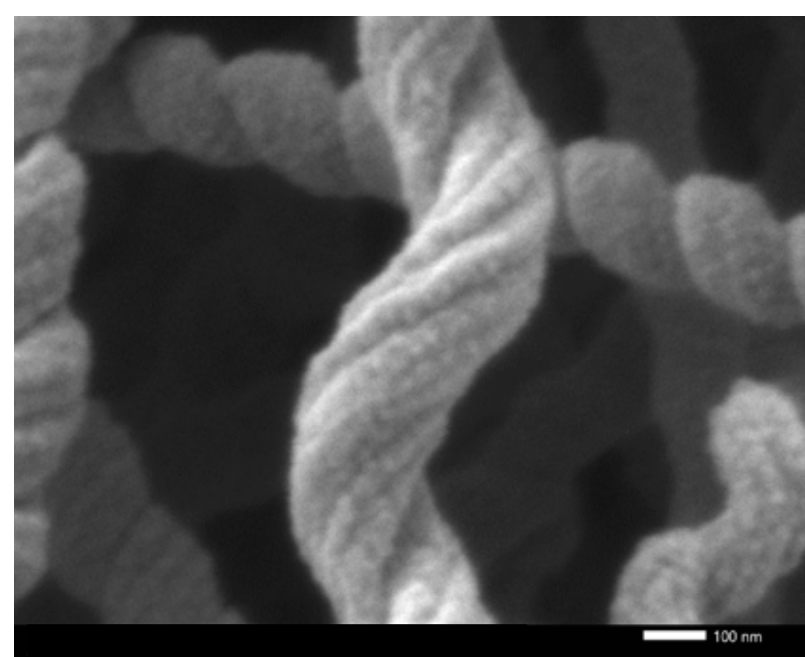
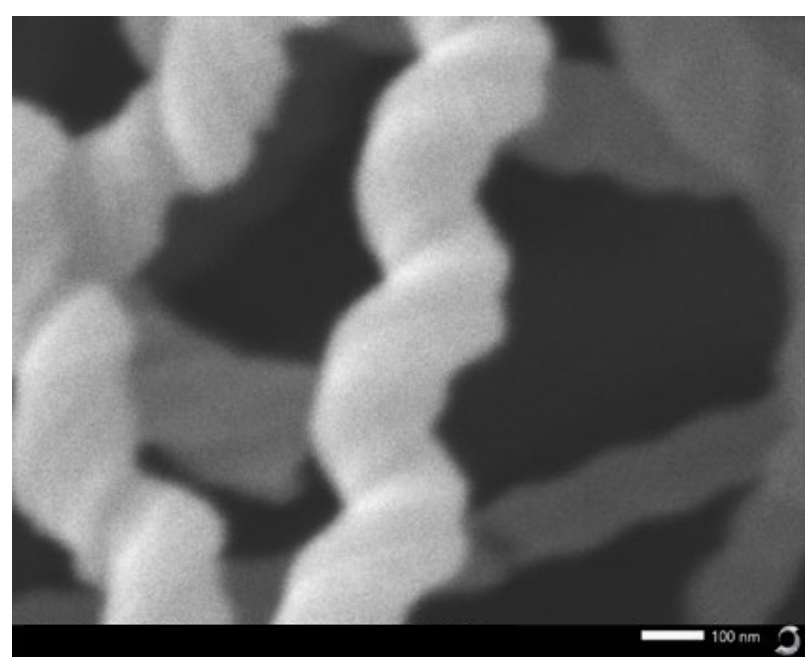
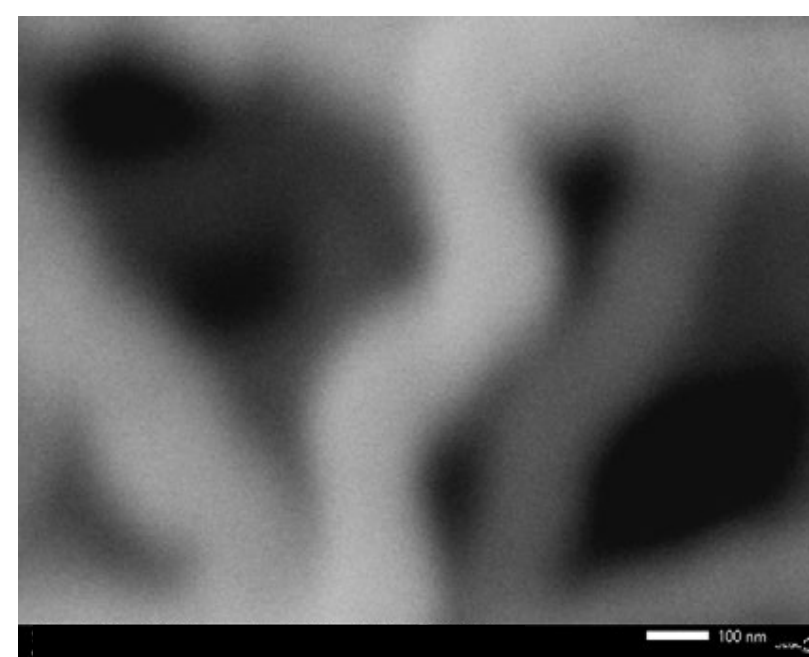
10um

2nm/pix



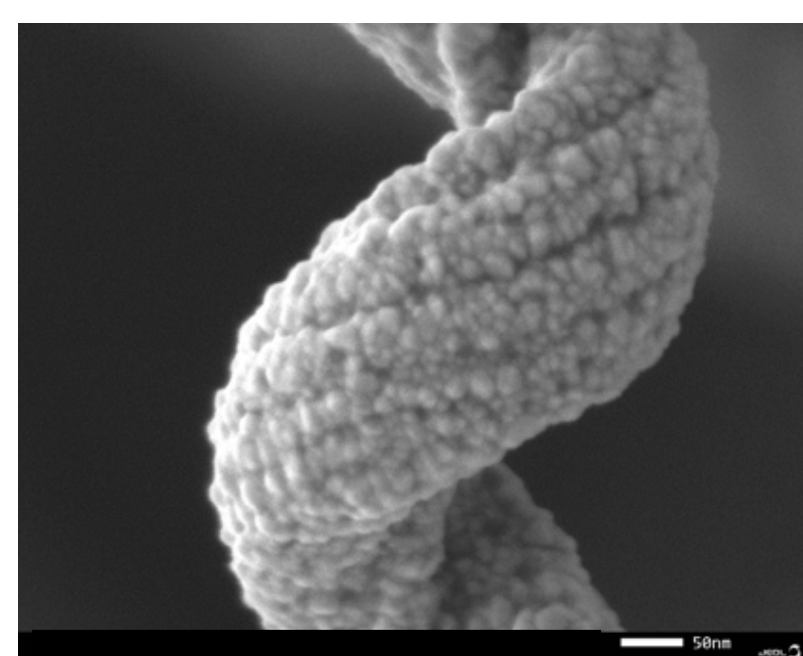
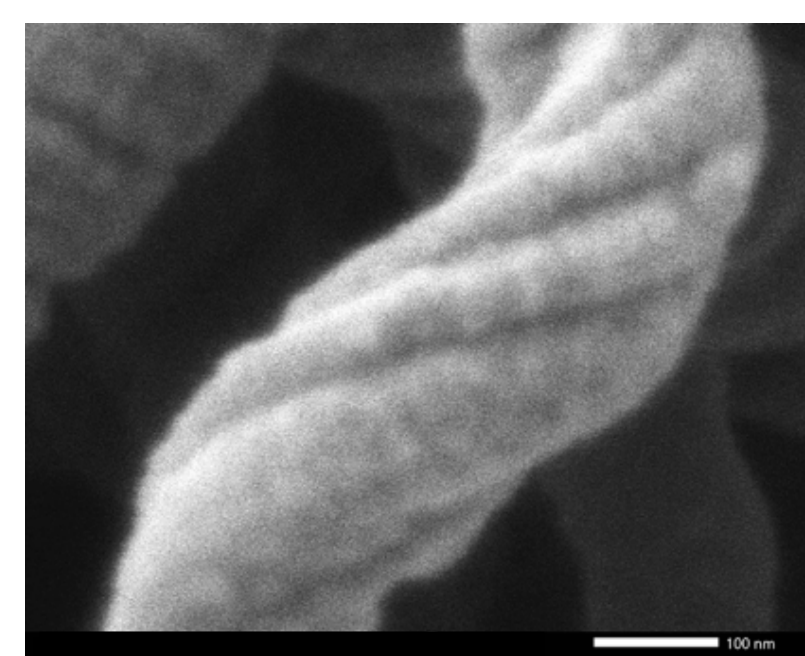
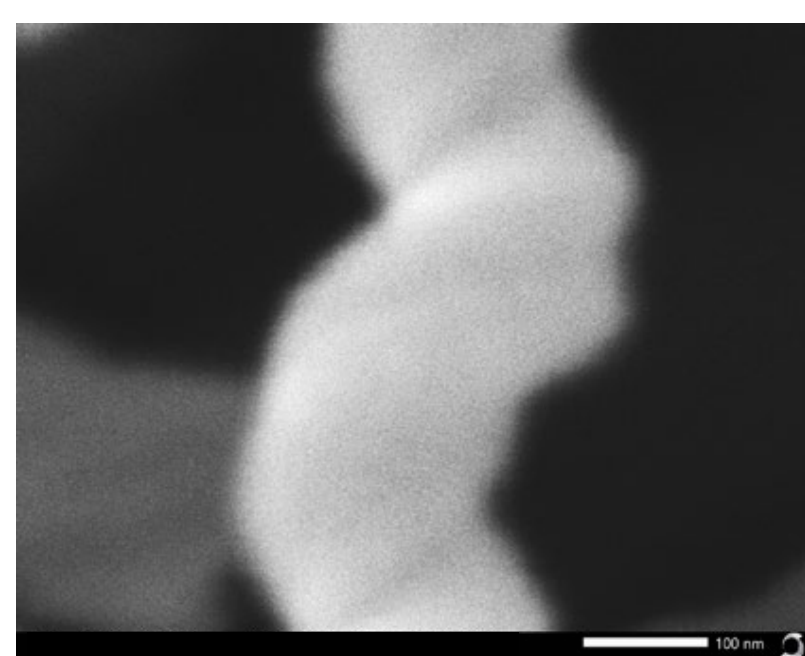
1um

1nm/pix



100nm

0.5nm/pix



10nm

1nm

\$

\$\$\$

JEOL Intelligent SEM technology offers the best solutions for your imaging and analysis needs. All JEOL SEMs feature advanced electron optics combined with hardware and software algorithms to provide exceptional ease of use and streamlined workflow:

- Automated alignment, focusing and stigmation
- Seamless navigation from optical to SEM image
- Embedded chemical composition analysis
- Multi-area automated acquisition (mosaic)
- Unparallel service and applications support